

# Characteristics and significance of healed plaques in patients with acute coronary syndrome and stable angina: an in vivo OCT and IVUS study



Chao Wang, MD; Sining Hu, MD; Jianjun Wu, MD; Huai Yu, MD, Weili Pan, MD; Yuhan Qin, MD; Luping He, MD; Lulu Li, MS; Jingbo Hou, MD, PhD; Shaosong Zhang, MD, PhD; Haibo Jia, MD, PhD; Bo Yu\*, MD, PhD

Department of Cardiology, The 2nd Affiliated Hospital of Harbin Medical University, The Key Laboratory of Myocardial Ischemia, Chinese Ministry of Education, Harbin, China

C. Wang and S. Hu contributed equally to this study.

## KEYWORDS

- coronary artery disease
- intravascular ultrasound
- optical coherence tomography

## Abstract

**Aims:** The aim of this study was to determine the prevalence and significance of plaque with a multilayered (ML) pattern in patients with acute coronary syndrome (ACS) versus stable angina pectoris (SAP) using OCT.

**Methods and results:** Two hundred and four patients (144 ACS and 60 SAP) with OCT imaging of the culprit lesions before intervention were studied. ML plaques were identified by OCT as plaque with multiple layers of distinct optical signals. ML plaque was identified in 119 out of 204 (58.3%) patients. ML plaques were more frequently observed in SAP than ACS (75% vs 51.4%,  $p=0.001$ ). Patients with prior myocardial infarction (MI) had a higher incidence of ML plaque compared with those without (74.4% vs 54.5%,  $p=0.024$ ). ML plaque had a higher degree of luminal stenosis ( $p=0.006$ ), longer lesion length ( $p=0.025$ ), more complex lesion type (B2/C) ( $p<0.001$ ) on angiography and non-significant larger plaque burden ( $p=0.07$ ) on IVUS compared with those without an ML pattern.

**Conclusions:** ML plaques, indicative of prior thrombosis, were frequently identified in patients with CAD, particularly more so in SAP and those with prior MI compared with ACS. The presence of an ML pattern is a marker of a greater extent and severity of CAD, suggesting a pathogenic link between plaque healing and lesion progression.

\*Corresponding author: Department of Cardiology, The 2nd Affiliated Hospital of Harbin Medical University, Chinese Ministry of Education, 246 Xuefu Road, Nangang District, Harbin, 150086, China. E-mail: yubodr@163.com

## Abbreviations

<b>ACS</b>	acute coronary syndrome
<b>IVUS</b>	intravascular ultrasound
<b>MI</b>	myocardial infarction
<b>OCT</b>	optical coherence tomography
<b>SAP</b>	stable angina pectoris
<b>STEMI</b>	ST-segment elevation myocardial infarction
<b>TCFA</b>	thin-cap fibroatheroma

## Introduction

Plaque rupture and plaque erosion are believed to be the most common underlying mechanisms for acute coronary syndrome (ACS)<sup>1,2</sup>. However, not all plaque ruptures and erosions lead to acute coronary events<sup>3,4</sup>. In contrast, these abrupt changes are often clinically silent but may contribute to rapid plaque progression and the development of high-degree stenosis<sup>3,5</sup>. Pathologically, healed ruptures/erosions often exhibit a multilayered (ML) pattern composed of distinct layers of collagen<sup>2</sup>. The prevalence and detailed morphological features of healed plaques, however, have never been investigated *in vivo*. Optical coherence tomography (OCT) with high resolution enables visualisation of the coronary arterial wall microstructure, specifically superficial tissue components<sup>1,6,7</sup>. As plaques with an ML pattern are composed of distinct tissue components with unique optical characteristics, OCT can be used to detect these multiple layers which are the pathologic hallmark of healed plaques<sup>6</sup>. The primary goal of this study was to determine the prevalence, morphological features, and significance of ML plaques as detected by OCT in patients with ACS and stable angina pectoris (SAP).

Editorial, see page 742

## Methods

### STUDY POPULATION

A total of 268 consecutive patients with ACS or SAP who underwent pre-interventional OCT imaging of the culprit lesions were included. Sixty-four patients were excluded for the following reasons: prior stenting (n=23), significant residual thrombus (n=7), poor image quality (n=11), incomplete culprit lesion imaging (n=5), and severe calcification (n=10). In addition, eight patients with ACS caused by coronary spasm, spontaneous coronary dissection, or other unclassified lesions were also excluded. A total of 204 patients (144 ACS and 60 SAP) with analysable OCT images were included in the final analysis. In patients with ACS (64 ST-segment elevation myocardial infarction [STEMI] and 80 non-ST-segment elevation acute coronary syndrome [NSTEMI]), aspiration thrombectomy (Export<sup>®</sup> aspiration catheter; Medtronic, Santa Rosa, CA, USA) prior to OCT imaging was allowed in patients with large occlusive thrombus or a Thrombolysis In Myocardial Infarction (TIMI) flow grade <2. All treatment strategies were decided by the operators according to local practice. Intravascular ultrasound (IVUS) was performed in a subset of 45 patients. The study was approved by the institutional review boards and all subjects provided informed consent.

### OCT AND IVUS IMAGE ACQUISITION AND INTERPRETATION

After diagnostic angiography, IVUS and OCT imaging were performed in the culprit vessel. IVUS examinations were performed using an Atlantis<sup>™</sup> Pro catheter (Boston Scientific, Marlborough, MA, USA) after intracoronary administration of 100 to 200 µg nitroglycerine. The catheter was pulled back automatically at 0.5 mm/s. Following IVUS imaging, OCT imaging was performed as previously described<sup>1</sup>.

OCT images were analysed using an offline review workstation.

An ML pattern was defined as multiple layers with distinct optical density from underlying plaque components according to previous *ex vivo* and pathology validation studies (**Figure 1, Figure 2**)<sup>6,8</sup>. Fibrous or lipid was defined as previously reported<sup>7,9</sup>. Fibrous cap thickness (FCT) was measured three times at its thinnest part, and the average value was calculated. Thin-cap fibroatheroma (TCFA) was defined as a plaque with lipid content in at least two quadrants, with the thinnest part of the fibrous cap measuring less than 65 µm<sup>10</sup>. Plaque rupture was identified by the presence of fibrous cap discontinuity with a clear cavity formed inside the plaque<sup>11,12</sup>. Plaque erosion was defined as the presence of intracoronary thrombus attached to the luminal surface with no detectable signs of fibrous cap rupture<sup>12</sup>. Thrombus was defined as a mass floating in or protruding into the lumen with a dimension of at least 250 µm. Quantitative OCT measurements included lesion length and lumen cross-sectional area (CSA) at lesion sites as well as reference sites. The inter-observer kappa coefficients for ML pattern, thrombus, and plaque rupture were 0.85, 0.86, and 0.89, respectively. The intra-observer kappa coefficients for ML phenotype, thrombus, and plaque rupture were 0.92, 0.95, and 0.95, respectively.

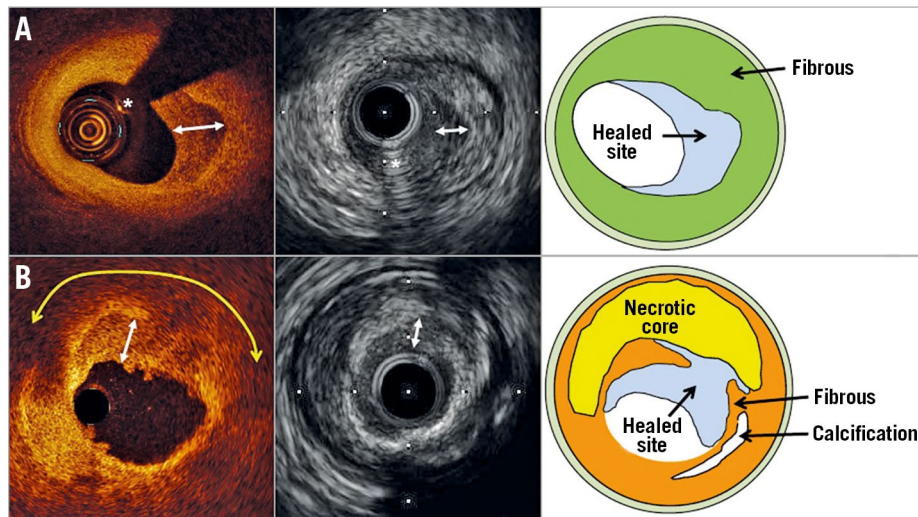
In a subgroup of patients, corresponding IVUS images were selected using fiducial points such as calcifications, side branches, and stents. All IVUS images were analysed using semi-automatic software (echoPlaque; INDEC Systems, Mountain View, CA, USA). IVUS measurements included the external elastic membrane (EEM) CSA, lumen CSA, plaque plus media (P+M) CSA, and maximum and minimum atheroma diameter according to previously published methods.

### QUANTITATIVE CORONARY ANGIOGRAPHY

Angiographic images were analysed using a quantitative coronary angiogram analysis program (CAAS 5.10.1; Pie Medical Imaging BV, Maastricht, the Netherlands). Reference diameter, minimum lumen diameter, lesion length, and percent diameter stenosis were measured.

### CLINICAL OUTCOMES

Patients were followed up by telephone call or hospital visit at six months and 12 months. When a clinical event was identified, detailed data were collected at the study site and entered into the database. Clinical events included death from any cause, myocardial infarction, and target lesion revascularisation.



**Figure 1.** OCT and IVUS images of plaques with a multilayered pattern. OCT images showed multiple layers with distinct optical signals overlying a plaque without (A) or with (B) a large lipid core (yellow double arrow). Corresponding IVUS image shows multiple layers with distinct echogenicity. Two-headed arrows indicate the layer of healed lesion atop the original lesion. Asterisk indicates wire artefact.

## STATISTICAL ANALYSIS

Categorical data were compared using either a chi-square test or Fisher's exact test, and are presented as counts (proportions). Continuous variables were compared using the independent samples t-test or Mann-Whitney test between the two groups. All statistical analyses were performed using SPSS, Version 18.0 (SPSS, Chicago, IL, USA). P-values <0.05 were considered statistically significant.

## Results

### BASELINE CHARACTERISTICS

Out of 204 patients, 119 (58.3%) showed an ML pattern in the culprit lesion. The baseline characteristics of patients with and without an ML pattern are summarised in **Table 1**. No significant difference was observed, except for a higher incidence of

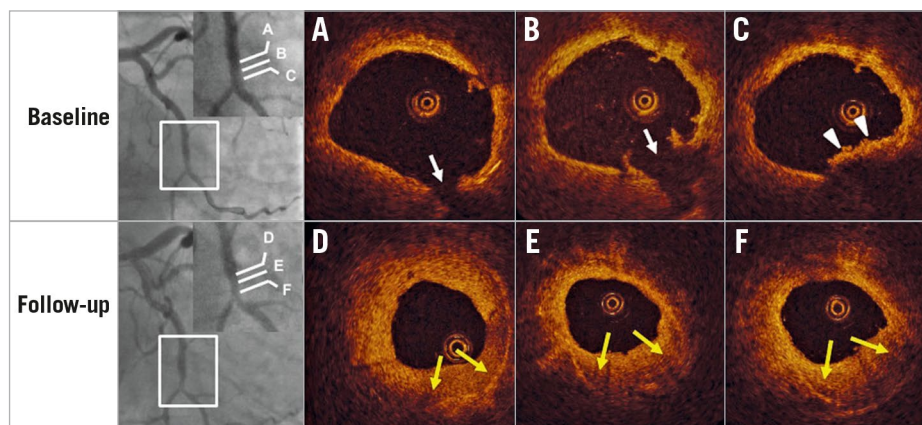
prior MI, use of angiotensin-converting enzyme inhibitor/angiotensin II receptor blocker (ACEI/ARB), and presentation with SAP in patients with an ML pattern.

### ANGIOGRAPHIC FINDINGS

Quantitative coronary angiography data are detailed in **Table 2**. Patients with the ML pattern had a smaller minimum lumen diameter (MLD), a higher degree of diameter stenosis, and greater lesion length. Complex lesions (type B2/C) were more frequent in patients with the ML pattern.

### THE PREVALENCE OF THE ML PATTERN

Overall, the prevalence of the ML pattern was 58.3% in culprit sites. It was more frequently detected in patients with SAP



**Figure 2.** A case with silent plaque rupture in a non-culprit site healed with a multilayered pattern and luminal narrowing. Silent plaque rupture (arrows in A and B) with mural thrombus (arrowheads in C) was observed in the distal left circumflex. Six-month follow-up angiogram (bottom left) showed rapid progression at the site of previous rupture. OCT images demonstrated that previous rupture and thrombus healed with a multilayered pattern and significant lumen encroachment (yellow arrows in D, E, and F).

**Table 1. Baseline characteristics.**

	Overall (n=204)	ML pattern (+) (n=119)	ML pattern (-) (n=85)	p-value
Age, years	59.3±11.3	59.8±10.4	58.6±12.3	0.45
BMI, kg/m <sup>2</sup>	25.7±4.6	26.0±5.1	25.4±3.8	0.38
Male	165 (80.9)	96 (80.7)	69 (81.2)	0.93
<b>Risk factor</b>				
Current smoking	70 (34.3)	38 (31.9)	32 (37.6)	0.40
Diabetes mellitus	57 (27.9)	39 (32.8)	18 (21.2)	0.07
Hyperlipidaemia	137 (67.2)	80 (67.2)	57 (67.1)	0.98
Hypertension	130 (63.7)	78 (65.5)	52 (61.2)	0.51
Chronic kidney disease	11 (5.4)	7 (5.9)	4 (4.7)	0.71
<b>Prior MI</b>	<b>39 (19.1)</b>	<b>29 (24.4)</b>	<b>10 (11.8)</b>	<b>0.02</b>
Prior CABG	1 (0.5)	1 (0.8)	0 (0)	1.00
Prior PCI	53 (27.0)	36 (31.3)	17 (21.0)	0.11
<b>Medication</b>				
ACEI/ARB	67 (32.8)	47 (39.5)	20 (23.5)	0.015
Statin	86 (42.2)	54 (45.4)	32 (37.6)	0.27
Beta-blocker	61 (29.9)	40 (33.6)	21 (24.7)	0.17
<b>Presentation</b>				
ACS	144 (70.6)	74 (62.2)	70 (82.4)	0.002
SAP	60 (29.4)	45 (37.8)	15 (17.6)	
<b>Laboratory findings</b>				
TC, mg/dl	179.1±45.7	179.8±45.0	173.2±42.8	0.30
HDL-C, mg/dl	46.4±20.3	45.7±14.3	48.3±23.6	0.35
LDL-C, mg/dl	101.9±34.8	103.3±35.8	97.1±32.1	0.23
TG, mg/dl	145 (88.6, 195)	150 (88.6, 213.3)	145 (88.6, 177.1)	0.58*
HbA1C, %	6.3±1.3	6.3±1.3	6.1±1.4	0.27
hs-CRP, mg/dl	1.0 (0.2, 5.0)	1.0 (0.2, 3.5)	1.0 (0.16, 5.0)	0.35*

Data are presented as mean±SD, medians (25<sup>th</sup>-75<sup>th</sup> percentiles), or n (%). \*p-values were calculated with the use of the Mann-Whitney test. ML: multilayered

**Table 2. Angiographic findings.**

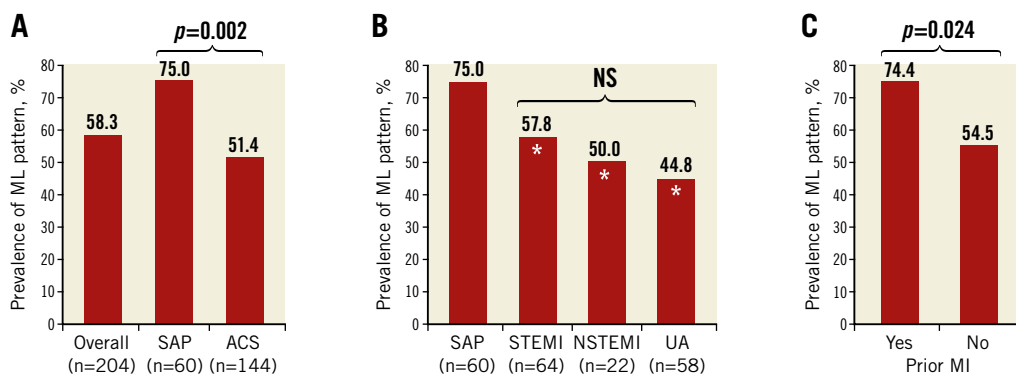
	ML pattern (+) (n=119)	ML pattern (-) (n=85)	p-value
<b>QCA results</b>			
Reference vessel diameter, mm	3.2±0.78	3.3±0.83	0.19
Minimum lumen diameter, mm	1.1±0.53	1.4±0.76	0.002
Diameter stenosis, %	63.3±15.9	56.7±17.9	0.006
Lesion length, mm	17.2±6.5	15.1±5.4	0.025
Multivessel disease	68 (57.1)	37 (43.5)	0.055
<b>Lesion type</b>			
A/B1	28 (23.5)	40 (47.1)	<0.001
B2/C	91 (76.5)	45 (52.9)	
<b>Culprit vessel</b>			
LAD	58 (48.7)	50 (58.8)	0.36
RCA	39 (32.8)	22 (25.9)	
LCX	22 (18.5)	13 (15.3)	

Data are presented as mean±SD, or n (%).

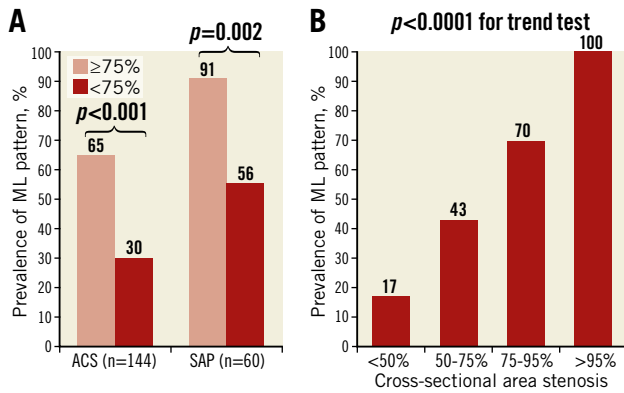
compared to those with ACS (75.0% vs 51.4%, p=0.002), whereas there was no significant difference in the incidence of the ML pattern between patients with STEMI, NSTEMI, and unstable angina pectoris (UAP) (**Figure 3A, Figure 3B**). Patients with prior MI displayed a higher prevalence of the ML pattern compared to patients without prior MI (74.4% vs 54.5%, p=0.024) (**Figure 3C**).

**ML PATTERN AND DEGREE OF STENOSIS**

The ML pattern was more prevalent in patients with severe (≥75%) stenosis compared to those with less severe (<75%) stenosis (72% vs 39%, p<0.001). This difference was observed in both the ACS cohort (65% vs 30%, p<0.001) and the SAP cohort (91% vs 56%, p=0.002) (**Figure 4A**). The prevalence of the ML pattern increased with increased degrees of cross-sectional area stenosis (**Figure 4B**).



**Figure 3. Prevalence of plaque with multilayered pattern according to clinical presentations.** The overall prevalence of multilayered (ML) pattern was 58.3% in the whole cohort. ML pattern was more frequently observed in patients with SAP than in those with ACS (A), while no difference was observed between those with STEMI, NSTEMI, and UAP (B). Higher prevalence of ML pattern was observed in patients with prior MI compared to those without (C). \*p<0.05 compared with SAP group.



**Figure 4.** Prevalence of multilayered pattern according to the degree of stenosis. Higher prevalence of ML pattern was consistently observed in patients with critical stenosis compared to those without, regardless of clinical presentation (A). The prevalence of ML pattern increased with increased degrees of cross-sectional area stenosis (B) ( $p < 0.0001$ , Cochran-Armitage trend test).

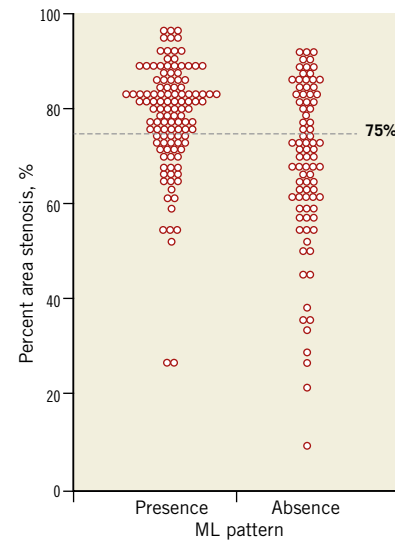
### OCT FINDINGS

Qualitative and quantitative OCT data are presented in **Table 3**. The prevalence of lipid plaque, TCFA, plaque rupture, plaque erosion, and microchannels was similar between patients with and without the ML pattern (**Table 3**). Thrombus tends to be seen less frequently in patients with the ML pattern, probably due to more frequent presentation with SAP rather than ACS in this cohort. Quantitative OCT analysis showed that patients with the ML

**Table 3. OCT findings of underlying plaque characteristics.**

		ML pattern (+) (n=119)	ML pattern (-) (n=85)	p-value
<b>Qualitative analysis</b>				
Plaque type	Fibrous plaque	47 (39.5)	28 (32.9)	0.34
	Lipid plaque	72 (60.5)	57 (67.1)	
Thin-cap fibroatheroma		36 (30.5)	29 (34.1)	0.56
Plaque rupture		49 (41.2)	37 (43.5)	0.74
Plaque erosion		37 (31.1)	36 (42.4)	0.09
Thrombus		71 (59.7)	62 (72.9)	0.05
Calcification		67 (56.3)	37 (43.5)	0.07
Microchannel		48 (40.3)	33 (38.8)	0.83
<b>Quantitative analysis</b>				
Fibrous cap thickness, $\mu\text{m}$		63.0 (53.0, 93.0)	63.5 (53.3, 123.5)	0.85
Maximal lipid arc, $^{\circ}$		259.0 (196.0, 328.0)	254.0 (181.3, 306.8)	0.77
Lipid length, mm		12.0 (9.3, 16.2)	9.8 (7.1, 14.6)	0.07
Mean reference CSA, $\text{mm}^2$		7.1 $\pm$ 2.8	7.6 $\pm$ 2.7	0.17
MLA, $\text{mm}^2$		1.4 $\pm$ 0.9	2.3 $\pm$ 1.6	<0.001
CSA stenosis, %		79.0 $\pm$ 11.6	68.7 $\pm$ 17.7	<0.001
Lesion length, mm		16.2 $\pm$ 6.0	13.9 $\pm$ 4.7	0.003
Data are presented as n (%), or mean $\pm$ SD. CSA: cross-sectional area; MLA: minimum lumen area				

pattern had smaller minimum lumen area (MLA), greater CSA stenosis, and greater longitudinal length (**Table 3, Figure 5**).



**Figure 5.** Distribution of percent area stenosis according to the presence of the multilayered pattern. Higher degree luminal stenosis (>75% area stenosis) was more frequently observed in lesions with the ML pattern.

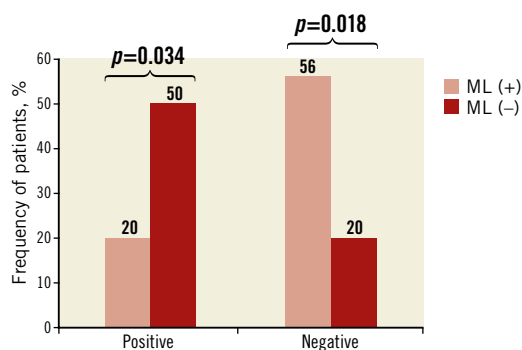
### IVUS FINDINGS

Forty-five patients (37 ACS and eight SAP) underwent both OCT and IVUS imaging of the culprit vessel. Within this subgroup, OCT identified 25 patients with the ML pattern and 20 without. IVUS findings in these 45 patients are summarised in **Table 4**. Plaque-related parameters at the lesion site were similar between the two groups, except for smaller plaque eccentricity in the ML pattern group. Negative remodelling was more frequently observed

**Table 4. IVUS findings.**

	ML pattern (+) (n=25)	ML pattern (-) (n=20)	p-value
<b>Lesion sites</b>			
EEM CSA, $\text{mm}^2$	13.3 $\pm$ 3.5	13.9 $\pm$ 4.2	0.60
Lumen CSA, $\text{mm}^2$	2.0 $\pm$ 0.9	2.4 $\pm$ 1.4	0.18
P&M CSA, $\text{mm}^2$	11.5 $\pm$ 3.5	11.5 $\pm$ 3.6	0.99
Plaque burden, %	85.4 $\pm$ 6.4	81.5 $\pm$ 6.2	0.07
Remodelling index	0.95 $\pm$ 0.11	1.05 $\pm$ 0.12	0.006
Eccentricity, %	68.0 $\pm$ 17.5	80.4 $\pm$ 14.1	0.013
<b>Reference sites</b>			
Proximal reference			
EEM CSA, $\text{mm}^2$	15.8 $\pm$ 4.1	15.0 $\pm$ 5.1	0.53
Lumen CSA, $\text{mm}^2$	7.7 $\pm$ 3.1	8.5 $\pm$ 4.0	0.43
Distal reference			
EEM CSA, $\text{mm}^2$	13.0 $\pm$ 3.8	12.0 $\pm$ 4.1	0.37
Lumen CSA, $\text{mm}^2$	6.6 $\pm$ 2.7	6.4 $\pm$ 2.8	0.76
Data are presented as mean $\pm$ SD. CSA: cross-sectional area; EEM: external elastic membrane; P&M: plaque plus media			

in the ML pattern group (56% vs 20%,  $p=0.018$ ), whereas positive remodelling was more frequently seen in the non-ML pattern group (50% vs 20%,  $p=0.034$ ) (Figure 6).



**Figure 6.** Remodelling in patients with and without the multilayered pattern in culprit lesions.

### CLINICAL OUTCOMES AT ONE YEAR

One-year follow-up data were obtained in 193 (94.6%) patients. The incidence of major adverse cardiac events (MACE) at one-year follow-up is detailed in Table 5. The overall incidence of MACE was 11.3%. There was no significant difference in event rates between the two groups.

**Table 5. One-year clinical outcomes.**

	Overall	ML pattern (+)	ML pattern (-)	p-value
Death	2 (1.0)	0 (0)	2 (2.6)	0.41
Acute MI or ACS	3 (1.5)	2 (1.7)	1 (1.3)	0.78
Revascularisation	19 (9.8)	14 (11.9)	5 (6.5)	0.28
TLR	8 (4.1)	5 (4.2)	3 (3.9)	0.90
Non-TLR	11 (5.7)	9 (7.8)	2 (2.6)	0.15
Any event	22 (11.3)	15 (12.7)	7 (9.1)	0.41

Data are presented as n (%). ACS: acute coronary syndrome; MI: myocardial infarction; TLR: target lesion revascularisation

## Discussion

To the best of our knowledge, this is the first *in vivo* study investigating the prevalence and clinical significance of plaque with an ML pattern. The main findings of the current study are: (1) the ML pattern was present in over half of the patients and was more frequently observed in patients with SAP compared to ACS; (2) patients with an ML pattern at the culprit site had a higher degree of luminal stenosis, longer and more complex lesions; and (3) an ML pattern was associated with negative remodelling on IVUS.

### IN VIVO DETECTION OF HEALED PLAQUES BY INTRACORONARY OCT

The ML pattern is considered to represent healed sites of repeated silent plaque rupture or erosion<sup>2,13-15</sup>. Autopsy studies have shown that the sites of healed plaque rupture or erosion are characterised

by multiple layers of distinct tissue. On OCT imaging, lesions in the early stage of healing appear as a layer of high OCT signal representing the original fibrous cap (type I collagen), covered by layers of low OCT signal representing loose newly-formed type III collagen<sup>26</sup>. The interface between these layers of tissue can be detected on imaging as a band of high signal backscatter, and several studies using different imaging modalities (IVUS and magnetic resonance imaging [MRI]) used this appearance to define healed lesions<sup>6,16,17</sup>. The resolution of both IVUS and MRI, however, is limited. OCT is a promising imaging modality for *in vivo* detection of this layered structure. Otsuka et al have recently compared the OCT appearance of healed plaque directly with pathology, and proposed that healed plaque can be detected by OCT using the landmark of multiple tissue layers<sup>6</sup>. A recent study demonstrated that OCT-derived healed coronary plaques showed high positive and negative predictive values for predicting histologically defined healed coronary plaques. Besides, 77% of the target lesion in patients with stable ischaemic heart disease have OCT-derived healed coronary plaques, which was consistent with our findings<sup>8</sup>.

### PREVALENCE OF HEALED PLAQUE

Burke et al investigated 142 men who experienced sudden coronary death, and noted healed rupture in 61% of cases and an even greater prevalence in cases with stable plaque (80%)<sup>15</sup>. In the present study, the ML pattern characterising healed plaques on OCT imaging was observed in 58% of patients with symptomatic atherosclerotic disease, which is consistent with pathology studies (61%)<sup>15</sup>. Souteyrand et al studied plaque healing for the first time in a serial OCT study in ACS patients, showing the layer appearance mainly in cases with ACS due to erosion<sup>18</sup>. More than half of the patients with ACS showed the ML pattern at the culprit site, indicating that plaque instability and subclinical thrombosis commonly occur before the development of cardiac events. Our study identified a greater prevalence of the ML pattern in patients with a history of prior MI compared to those without. This finding seems logical as patients who had survived a prior MI most likely experienced a thrombotic event and it also confirms that an OCT-defined ML pattern is the morphological fingerprint of a previous plaque rupture or erosion.

### HEALED PLAQUES AND HIGH-GRADE STENOTIC LESIONS

Atherosclerotic plaques develop and gradually narrow the arterial lumen to a critical degree with a consequent supply-demand imbalance<sup>19</sup>. This concept was widely accepted until serial angiographic studies in patients with chronic stable ischaemic heart disease showed that plaque progression in these patients was phasic rather than linear<sup>20-23</sup>. It is reported that episodic plaque growth is mediated by plaque rupture or erosion with subsequent thrombosis healing<sup>24</sup>. An autopsy study reported that the majority of high-grade lesions were caused by rapid plaque growth triggered by prior episodes of rupture. In our study, we found that patients with an ML pattern compared with those without had a higher degree stenosis and more complicated lesions. Surprisingly, SAP had the highest frequency of the ML pattern

compared to the other population, suggesting that SAP patients may have experienced more episodes of thrombosis and healing before the lumen narrowed to a haemodynamically critical degree. In contrast, patients with ACS had a lower frequency of the ML pattern, suggesting fewer thrombosis-healing cycles. This discrepancy may be explained by the dynamic response following thrombosis in these two populations. Both systemic (more smoking, higher level of low-density lipoprotein [LDL] and high-sensitivity C-reactive protein [hs-CRP] in ACS) and local (more TCFA in ACS) thrombogenic factors may play a role in the thrombosis healing process. The lower incidence of positive plaque remodeling in the ML group is possibly due to the fact that there were fewer patients with ACS and more with SAP.

## Limitations

Several limitations should be considered in this study. First, this was a retrospective study. Second, the presence of calcification and/or thrombus overlying a lesion may reduce the ability to detect the ML pattern using OCT. Patients with severe calcification or significant residual thrombus were therefore excluded from this study. Third, in cases of plaque rupture or erosion that occurred in the distant past, the ML pattern may no longer be recognisable. The prevalence of healed plaque may therefore be underestimated when identified using the ML pattern. Fourth, the number of patients in this study with stable disease was relatively small. Fifth, in selected cases, thrombus aspiration before OCT imaging might have modified plaque morphology by causing plaque rupture or intimal fissure. However, in the cases with massive thrombus or an occluded artery, thrombus aspiration is necessary for OCT image acquisition. Sixth, some plaque components such as streaks of inflammatory cells may lead to a layer aspect and mimic plaque healing, which may cause false positive layer detection.

## Conclusions

The current study demonstrates that the ML pattern, representing repeated episodes of thrombosis, is more frequently observed in patients with stable coronary artery disease than in those with ACS. Presence of the ML pattern was associated with a higher degree of stenosis, longer lesions, and non-significant larger plaque burden. The ML pattern correlated with lesion progression but not features of plaque vulnerability.

### Impact on daily practice

The ML pattern, an OCT signature of prior thrombosis, can be used to facilitate a better understanding of the mechanisms driving plaque progression. In addition, the presence of new plaque with the ML pattern at follow-up can also be used to evaluate the pharmacological effect of lipid-lowering and antithrombotic therapy on plaque stabilisation. The ML pattern may therefore represent a potential tool in designing and evaluating preventive therapeutic strategies.

## Funding

This work was supported by a research grant from the National Natural Science Foundation of China, Harbin, China (81827806/B.Y., and 81330033/B.Y., 81722025/H.J., 81671763/H.J., 81701804/H.S.) and the National Key R&D Program of China (grant no. 2016YFC1301100 to B.Y.), Open Foundation of Key Laboratory of Myocardial Ischemia, Harbin Medical University, Chinese Ministry of Education (KF201410/C.W.), Harbin Medical University Innovation Fund Foundation Research Project (YJSCX2014-44HYD/C.W.).

## Conflict of interest statement

The authors have no conflicts of interest to declare.

## References

- Jia H, Abtahian F, Aguirre AD, Lee S, Chia S, Lowe H, Kato K, Yonetsu T, Vergallo R, Hu S, Tian J, Lee H, Park SJ, Jang YS, Raffel OC, Mizuno K, Uemura S, Itoh T, Kakuta T, Choi SY, Dauerman HL, Prasad A, Toma C, McNulty I, Zhang S, Yu B, Fuster V, Narula J, Virmani R, Jang IK. In vivo diagnosis of plaque erosion and calcified nodule in patients with acute coronary syndrome by intravascular optical coherence tomography. *J Am Coll Cardiol*. 2013;62:1748-58.
- Virmani R, Kolodgie FD, Burke AP, Farb A, Schwartz SM. Lessons from sudden coronary death: a comprehensive morphological classification scheme for atherosclerotic lesions. *Arterioscler Thromb Vasc Biol*. 2000;20:1262-75.
- Davies MJ. The contribution of thrombosis to the clinical expression of coronary atherosclerosis. *Thromb Res*. 1996;82:1-32.
- Finn AV, Nakano M, Narula J, Kolodgie FD, Virmani R. Concept of vulnerable/unstable plaque. *Arterioscler Thromb Vasc Biol*. 2010;30:1282-92.
- Hudson J, McCaughey WT. Mural thrombosis and atherogenesis in coronary arteries and aorta. An investigation using antifibrin and antiplatelet sera. *Atherosclerosis*. 1974;19:543-53.
- Otsuka F, Joner M, Prati F, Virmani R, Narula J. Clinical classification of plaque morphology in coronary disease. *Nat Rev Cardiol*. 2014;11:379-89.
- Tearney GJ, Regar E, Akasaka T, Adriaenssens T, Barlis P, Bezerra HG, Bouma B, Bruining N, Cho JM, Chowdhary S, Costa MA, de Silva R, Dijkstra J, Di Mario C, Dudek D, Falk E, Feldman MD, Fitzgerald P, Garcia-Garcia HM, Gonzalo N, Granada JF, Guagliumi G, Holm NR, Honda Y, Ikeno F, Kawasaki M, Kochman J, Koltowski L, Kubo T, Kume T, Kyono H, Lam CC, Lamouche G, Lee DP, Leon MB, Maehara A, Manfrini O, Mintz GS, Mizuno K, Morel MA, Nadkarni S, Okura H, Otake H, Pietrasik A, Prati F, Räber L, Radu MD, Rieber J, Riga M, Rollins A, Rosenberg M, Sirbu V, Serruys PW, Shimada K, Shinke T, Shite J, Siegel E, Sonoda S, Suter M, Takarada S, Tanaka A, Terashima M, Thim T, Uemura S, Ughi GJ, van Beusekom HM, van der Steen AF, van Es GA, van Soest G, Virmani R, Waxman S, Weissman NJ, Weisz G; International Working Group for Intravascular Optical Coherence Tomography (IWG-IVOCT). Consensus standards for acquisition, measurement, and reporting of intravascular optical coherence tomography studies: a report from the International Working Group for Intravascular Optical Coherence Tomography Standardization and Validation. *J Am Coll Cardiol*. 2012;59:1058-72.
- Shimokado A, Matsuo Y, Kubo T, Nishiguchi T, Taruya A, Teraguchi I, Shiono Y, Orii M, Tanimoto T, Yamano T, Ino Y, Hozumi T, Tanaka A, Muragaki Y, Akasaka T. In vivo optical coherence tomography imaging and histopathology of healed coronary plaques. *Atherosclerosis*. 2018;275:35-42.
- Jang IK, Bouma BE, Kang DH, Park SJ, Park SW, Seung KB, Choi KB, Shishkov M, Schlendorf K, Pomerantsev E, Houser SL, Aretz HT, Tearney GJ. Visualization of coronary atherosclerotic plaques in patients using optical

coherence tomography: comparison with intravascular ultrasound. *J Am Coll Cardiol*. 2002;39:604-9.

10. Yabushita H, Bouma BE, Houser SL, Aretz HT, Jang IK, Schlenker KH, Kauffman CR, Shishkov M, Kang DH, Halpern EF, Tearney GJ. Characterization of human atherosclerosis by optical coherence tomography. *Circulation*. 2002;106:1640-5.

11. Tian J, Ren X, Vergallo R, Xing L, Yu H, Jia H, Soeda T, McNulty I, Hu S, Lee H, Yu B, Jang IK. Distinct morphological features of ruptured culprit plaque for acute coronary events compared to those with silent rupture and thin-cap fibroatheroma: a combined optical coherence tomography and intravascular ultrasound study. *J Am Coll Cardiol*. 2014;63:2209-16.

12. Hu S, Yonetsu T, Jia H, Karanasos A, Aguirre AD, Tian J, Abtahian F, Vergallo R, Soeda T, Lee H, McNulty I, Kato K, Yu B, Mizuno K, Toutouzas K, Stefanadis C, Jang IK. Residual thrombus pattern in patients with ST-segment elevation myocardial infarction caused by plaque erosion versus plaque rupture after successful fibrinolysis: an optical coherence tomography study. *J Am Coll Cardiol*. 2014;63:1336-8.

13. Mann J, Davies MJ. Mechanisms of progression in native coronary artery disease: role of healed plaque disruption. *Heart*. 1999;82:265-8.

14. Tavora F, Li L, Ripple M, Fowler D, Burke A. Morphologic characteristic of coronary artery disease, with emphasis on thromboses, in patients younger than 40 years of age. *Patholog Res Int*. 2010;2010:628247.

15. Burke AP, Kolodgie FD, Farb A, Weber DK, Malcom GT, Smialek J, Virmani R. Healed plaque ruptures and sudden coronary death: evidence that sub-clinical rupture has a role in plaque progression. *Circulation*. 2001;103:934-40.

16. Qiao Y, Farber A, Semaan E, Hamilton JA. Images in cardiovascular medicine. Healing of an asymptomatic carotid plaque ulceration. *Circulation*. 2008;118:e147-8.

17. Matsuo Y, Cassar A, Li J, Flammer AJ, Choi BJ, Herrmann J, Gulati R, Lennon RJ, Kang SJ, Maehara A, Kitabata H, Akasaka T, Lerman LO,

Kushwaha SS, Lerman A. Repeated episodes of thrombosis as a potential mechanism of plaque progression in cardiac allograft vasculopathy. *Eur Heart J*. 2013;34:2905-15.

18. Souteyrand G, Arbustini E, Motreff P, Gatto L, Di Vito L, Marco V, Amabile N, Chisari A, Kodama T, Romagnoli E, Tavazzi L, Crea F, Narula J, Prati F. Serial optical coherence tomography imaging of ACS-causing culprit plaques. *EuroIntervention*. 2015;11:319-24.

19. Flugelman MY, Virmani R, Correa R, Yu ZX, Farb A, Leon MB, Elami A, Fu YM, Casscells W, Epstein SE. Smooth muscle cell abundance and fibroblast growth factors in coronary lesions of patients with nonfatal unstable angina. A clue to the mechanism of transformation from the stable to the unstable clinical state. *Circulation*. 1993;88:2493-500.

20. Alderman EL, Corley SD, Fisher LD, Chaitman BR, Faxon DP, Foster ED, Killip T, Sosa JA, Bourassa MG. Five-year angiographic follow-up of factors associated with progression of coronary artery disease in the Coronary Artery Surgery Study (CASS). CASS Participating Investigators and Staff. *J Am Coll Cardiol*. 1993;22:1141-54.

21. Haft JI, Haik BJ, Goldstein JE, Brodyn NE. Development of significant coronary artery lesions in areas of minimal disease. A common mechanism for coronary disease progression. *Chest*. 1988;94:731-6.

22. Uemura S, Ishigami K, Soeda T, Okayama S, Sung JH, Nakagawa H, Somekawa S, Takeda Y, Kawata H, Horii M, Saito Y. Thin-cap fibroatheroma and microchannel findings in optical coherence tomography correlate with subsequent progression of coronary atheromatous plaques. *Eur Heart J*. 2012;33:78-85.

23. Xie Z, Hou J, Yu H, Jia H, Du H, Lee H, Yu B, Tian J, Jang IK. Patterns of coronary plaque progression: phasic versus gradual. A combined optical coherence tomography and intravascular ultrasound study. *Coron Artery Dis*. 2016;27:658-66.

24. Corti R, Fuster V, Badimon JJ. Pathogenetic concepts of acute coronary syndromes. *J Am Coll Cardiol*. 2003;41:7S-14S.